



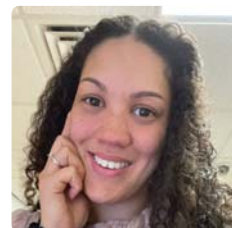
SNAPTIN HUB COMMUNITY NEWS

Winter 2023 | Edition 6

Let's all work to put 'Unity in the Community' in 2023

Goodbye 2022 and Hello 2023. With a New Year comes new opportunities, some of which can be found right here in our local area. We are pleased to be able to bring this newsletter to residents and update you on local events and groups that you may not have known about previously. Do you have a New Year's resolution this year? Does it include meeting new people or trying new things? If so, please check out our Dates for the Diary section. If you wish to add any information to the next copy, please contact us Snaptincommunityhub@gmail.com

Meet a Partnership Member



Stacey moved to Goldthorpe seven years ago when she got married. She can often be found volunteering at local church events or attending groups and activities. Having previously worked in the reception of Sacred Heart Primary School and as a self-employed accountant she joined the Snap Tin Community Hub as the support worker. Stacey enjoys being outdoors making memories with her family and friends, taking photographs, and exploring. She is always up for a new adventure and challenge.

Dates for the Diary



Goldthorpe Pentecostal Community Church Monday 16 January, Mindfulness Moments 6-8pm

Goldthorpe Railway Embankment

Sat 21 Jan, Bird Feeder Maker event 11-1pm. Come down and make a bird feeder to take part in the RSPB Big Garden Bird Watch. Please bring a small plastic bottle with lid

Goldthorpe Pentecostal Community Church

Tues 7 Feb 1.45pm, Prayer Meeting at Dearne Churches
Wednesday 15 Feb, 10am-1pm Family Fun Day at Goldthorpe Pentecostal Community Church

Goldthorpe Development Group

OAP Get Together at The Unity Club on King Street.
£3 fee includes Food, Bingo & Raffle Prizes. Wed 11 Jan, 1-4pm • Wed 1 February, 1-4pm • Wed 1 March, 1-4pm

More Money in your Pocket



With the cost of living rising in most areas, Barnsley council have launched an initiative called more money in your pocket. The QR code below or website would take you to the information on what is available in the area. There is help for housing, utilities, food and much more, all the details can be found in their relevant tabs.

Find out more information and support to help with the rising cost of living.

Visit barnsley.gov.uk/more-money-in-your-pocket or scan the QR code.



THE **SNAPTIN**
COMMUNITY HUB



Snaptincommunityhub@gmail.com
www.snaptincommunityhub.co.uk
Snap Tin Community Hub

1 Barnburgh Lane,
Goldthorpe,
Barnsley S63 9PG

What's on Weekly?

Snap Tin Community Café

- MON** Forget Me Not Café (*Dementia friendly Café*), 10-12pm
Craft Class, 10-12pm
- TUES** Ukulele suitable for Beginners, 10.30-12.30pm
Self-Help Group, 1-3pm
- WED** Men's Group, 1-2.30pm
- THURS** Bringing People Together Coffee Morning, 10.30-12pm
National Union of Mineworkers, 10-12pm
- FRI** Sewing Class, 9.30-11.30am & 12.30-2.30pm
Veterans Breakfast Club, 9.30-11am (*every other Friday*)
Stroke Association Support Group
Second Friday of every month 11-12pm

Goldthorpe Pentecostal Community Church

- TUES** Dearne Keep Fit, 10-11.30am
- WED** Parents & Toddler Group, 9-11am
- THURS** Church Bible Study/Prayer Meeting, 7.30-9pm
- FRI** Parents & Toddler Group, 9-11am
- SAT** Coffee Morning, 10-12pm First Saturday in the month
- SUN** GPCC Church Service, 10.30-12pm & 6-7.30pm

Astrea Academy Dearne

- SUN** Hope Church, starting at 10.30am

St Andrews Community Hall

- MON** Encore Productions Musical Theatre Group, 7-9pm (6-15 year old)
- WED** Encore Productions Musical Theatre Group, 7-9pm (16+ years old)
- WED** B:Friend, 10-12pm

The Renaissance Centre

- MON** Crafty Sew 'n' Sews, 10-12pm
Keep Fit, 9.30-10.30am
- TUES** Tai Chi, 10-11am
Silk Painting, 10-12pm
- WED** Lacewood Ladies Sewing, 6.30-8.30pm
Keep Fit, 9.30-10.30am
Dearne Kids, 5-7pm
- FRI** Art Class, 10-12pm
Keep Fit, 9.30-10.30am
Yoga, 1-2pm

Dearne I Know I Can Centre

- MON** 6.30-8.30pm for 11-13 year olds
- THURS** 7-9pm for 13-19 year olds

Snap Tin Community Hub Open Day

On Thursday 19 January 2023 we will be holding a Community Open Day, 11am-3pm at the Snap Tin Café. Come along to see the projects we were involved in last year and our plans for the community. There will also be a chance to chat with some of the Partnership members and enjoy free refreshments.

Upcoming Partnership Meetings will be held on 26 January, 23 February & 30 March at 4.30pm at The Snap Tin Café.



Scarecrow Trail



Thank you to everyone who took part in our first Scarecrow Trail in October 2022, whether creating a scarecrow, displaying one or taking part in the trail and voting.

We were delighted to have over 30 entries across Goldthorpe, Highgate and Bolton Upon Dearne. The winner was number 20, closely followed by numbers 8 and 18 in a tie for second place, with just one vote less. We will be doing it all bigger and better in 2023 so look out for dates and information on how to enter.



Christmas Wrapped Up



We held our first Christmas Fair at the Astrea Academy on Friday 2 December. It was brilliant that we had over 500 local residents through the doors and hope that you all had an amazing time.

Activities included a free Santa's Grotto and a visit from Elsa, Anna and Olaf, both which the younger children really loved. We had a fabulous variety of performances on



stage including a Christmas themed magic show from Magic Daz, the Barnsley Metropolitan Brass Band who entertained us with Christmas Carols and Angel Voices who wowed us with their beautiful singing and great performances.

A massive thank you to the local businesses and stall holders who attended and provided us with a good array of handmade Christmas present ideas. Special thanks to all the volunteers especially Peter Finnegan, Goldthorpe, Highgate and Bolton on Dearne's very own Father Christmas. We were delighted with how everything went and look forward to organising more events to bring the community together in 2023.