



SNAPTIN HUB COMMUNITY NEWS

Winter 2025 | Edition 14



What's on Weekly?

Venue	MONDAY	TUESDAY	WEDNESDAY	THURSDAY	FRIDAY	SATURDAY	SUNDAY
Snap Tin Café	Forget Me Not Café (10-12) Crochet Class (12.30-2.30)	Ukulele (10.30-12.30)	Beginner Sewing Class (9.30-12) Sewing Class (12.30-3pm)	Sewing Class (9.30-12) Bringing People Together Coffee Morning (10.30-12) National Union of Miners (9-12) Sewing Class (12.30-3pm)	Sewing Class (9.30-12) & (12.30-3pm) Stroke Support Group (11-12pm) second Friday of every month		
Goldthorpe Pentecostal Community Church		Dearne Keep Fit (10-11.30am)	Parent and Toddler Group (9-11am)	Church Bible Study/Prayer Meeting (7.30-9pm)	Parent and Toddler Group (9-11am)	Coffee Morning (10-12pm) first Saturday in the month	Church Service (10.30-12pm) & (6-7.30pm)
Goldthorpe Parish Hall	Dance Fit Goldthorpe (6.30- 7.30pm)	Shotokan Karate (7-8.30pm)	Thurnscoe Male Voice Choir Rehearsals	Shotokan Karate (7-8.30pm)	Kronik Warrior Boxing Gym (4.30-6.30pm)	Coffee Morning (10-12pm) Last Saturday in the month	Parish Mass starting at 10.30am
Goldthorpe Library	Parent Social Group (9.30-10.30am) Quiz Games and Coffee Session (11-12pm) Kids Chess Club (3.30-4.30pm)	Story and Rhyme 1pm	Mindfulness Sessions (11-12pm)	Coffee Morning (11-12pm) Readers Group (5.30-6.30pm) first Thursday of every month	Mindfulness Colouring (10-11am)	Kids Lego Club (10-11:30am)	
Dearne I Know I Can Centre	11-13 Year Old Youth Club (6.30-8.30pm)			13-19 Year Old Youth Club (7-9pm)			
St Andrews Square Church Hall	Tea Dance fortnightly (3-5pm) Encore Production Musical Theatre Group for 6-15 Year Old (7-9pm)		Encore Production Musical Theatre Group 16+ (7-9pm) B:friend (10-12pm) Knit and Natter (2-4pm)	Line Dancing fortnightly (7-9pm)		Dance Night (7-9.30pm)	



THE **SNAPTIN**
COMMUNITY HUB



Snaptincommunityhub@gmail.com



www.snaptincommunityhub.co.uk



Snap Tin Community Hub

1 Barnburgh Lane,
Goldthorpe,
Barnsley S63 9PG



THE SNAP TIN COMMUNITY HUB

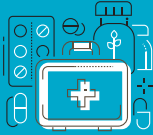
Our Legacy

We are incredibly proud of everything we've accomplished with the Snap Tin Community Hub over the past 10 years. We invite you to take a trip down memory lane. Explore our Legacy Boards to see how many projects you remember and were hopefully a part of. We also want to express our sincere gratitude to everyone who contributed to our journey.

Dearne & District FC Dugouts & Stand



We were thankful to be able to help Dearne & District Football Club with their dugouts and stand.



First Aid Training

Paid for first aid training for local volunteers.



Embankment Caretaker

We funded the Embankment Caretaker for a year.



Sponsored Flower Baskets



OVER 250 Covid Relief Parcels



Angel Voices Performing Arts Academy Sponsored for 1 year.

Angling For All

Angling For All was created to ensure anyone in our community can experience the joy of fishing, especially those facing disadvantages or at risk of involvement in crime. It offers a safe haven where young people can learn valuable skills, connect with nature, and use their time productively.

We've even funded the removal of vegetation to make the fishing area more accessible and enjoyable for everyone.

Equipment Storage

We funded an industrial container to keep equipment safe on site.

Purchased a Tractor

We purchased a Tractor for Highgate Allotment and a spiking machine for the greens.

www.snaptincommunityhub.co.uk

SNAP TIN
COMMUNITY HUB

Big Local

Big Local, a groundbreaking initiative funded by the lottery, empowered 150 communities across the country with £1 million each to invest in themselves. What made this initiative unique was that it put the power entirely in the hands of local residents, marking the first time a program of this scale had been entirely resident-led.

"Vision of empowered, resilient, dynamic, asset-rich communities making their own decisions on what is best for their area."

Local Trust



Local Trust Roundup

Below is a response from **Matt Leach, Chief Executive of Local Trust** with reference to problems associated with Dearne Community Housing:

"Local Trust recognises that residents currently involved in the partnership are not and should not be held responsible for earlier decisions made by the partnership, including in relation to the housing project, and it would be unfair for anyone to seek to do so."

Provided training & upskilling for workers

DEARNE COMMUNITY HOUSING LTD
"more than just a roof"

Purchased Properties
FOR SALE

Creates Affordable Rent

nesta
Innovative Prize Award

Local Businesses
Supported local businesses, purchasing carpets and blinds

The Guardian
The project featured in an article by Dawn Foster in the Guardian on 9th February 2016
"The aim was to provide, first, jobs and training for young people, then socially let family homes. These properties will be there as assets for the community," said April Fisher, a previous Support Worker of Goldthorpe and Bolton upon Dearne Big Local.

Painting the Bypass

Community Trip to
Sundown
ADVENTURELAND

Funded the first
Dearne Community
Arts Festival

Shutter Project - Ashes into Beauty
Dearne Community Arts Festival (DCAF) brightened up Goldthorpe with a colourful community art project. Local businesses along the main road have had their shop shutters painted in vibrant designs.
"Shutters may be a necessary part of protection these days, but they don't have to be uniformly drab and grey," said Julie Turner, DCAF secretary.
Artist Jayde Bell, also known as Eye Violet, created stunning artwork featuring scissors, butterflies, and cows. The project was funded by the Snap Tin Community Hub and aims to bring positive energy and a lasting legacy of colour to the town.

Bounce into Summer
We funded the first Bounce into Summer

SCARECROW Festival & Trail
We started a community Scarecrow Festival

180 PUPILS
Education
We paid for 180 Year 6's to complete an AQA qualification.

SNAP TIN
Snap Tin Cafe
For the past two years, we've proudly supported The Snap Tin Cafe, recognising the invaluable service they provide to our community.
They go beyond delicious food, hosting essential groups like dementia cafes, social gatherings, coffee mornings, veterans' breakfasts, and monthly stroke support groups.
Our funding directly helps keep these vital resources available for those who need them most.

Angling For All

Equipment Storage
We funded an industrial container to keep equipment safe on site.

Purchased a Tractor
We purchased a Tractor for Highgate Allotment and a spiking machine for the greens.

Community Newsletter
We delivered 75,000+ community newsletters, packed with upcoming events and contact details for local groups. This initiative kept our residents informed and connected.

Christmas Window Trail
We created a community Christmas Window Decorating Trail, spreading holiday cheer one window at a time.

Christmas Fairs
We brought the magic of Christmas to life with two festive fairs, offering free gifts from Santa and delightful entertainment for all ages.